

**SHaW Maths Hub**  
**Secondary Update**  
**29 June 2020**

[View this email in your browser](#)



Please view this email in your browser to see the accompanying images.

**[Work Groups 2020-21 - bookings](#)**

Please book by 5pm on Tuesday 30th June to secure your place for the funded [Teaching for Mastery](#) Work Group, with £2000 support funding for every participating school. Whilst there may be some places available after this date, we are unable to guarantee this in all areas as we will be deploying Secondary Mastery Specialists based on bookings received up to and including 30th June.

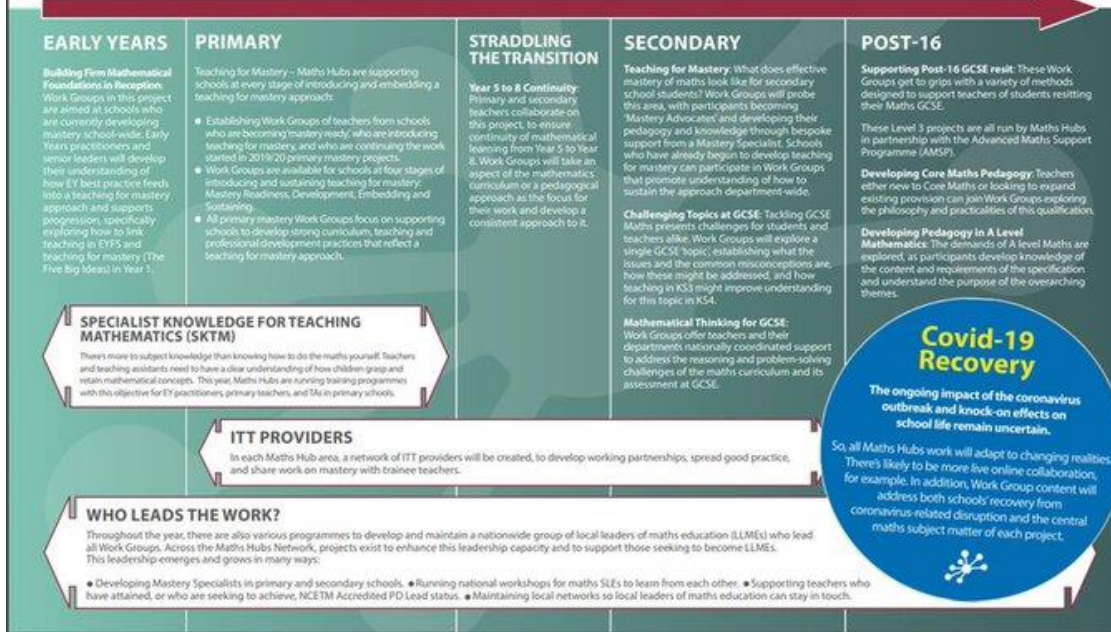
The sheet below provides information about the projects we will be running next year. Click [here](#) to see an enlarged version of the image below. New groups will be added to the [Work Groups page](#) on our website when ready.

## MATHS HUBS PROJECTS 2020/21

### HOW TO TAKE PART:

If you'd like to participate in any of this work, contact your local Maths Hub to find out how your school can get involved [www.mathshubs.org.uk](http://www.mathshubs.org.uk)

Every Maths Hub is again offering opportunities for schools to develop their maths teaching. The work spans the school and college phases, and addresses a range of themes. All Work Groups are broadly similar in structure, with schools and teachers at hub level engaging in professional development activities around an agreed targeted outcome. Just as in earlier year, results and successes will be measured and evaluated, and will inform subsequent years' projects. Contact your local hub to find out which projects suit your school.



## Work Groups 2019-20

### Online Survey

Please email [sba@tpstrust.co.uk](mailto:sba@tpstrust.co.uk) by 1pm on Tuesday 30th June, stating your Work Group, to receive a new link to your online survey if you are unable to locate the email sent by NCETM/Maths Hubs at the end of April. Thank you to all participants that have completed their online surveys. Please note that there are no online surveys for Innovation Work Groups.

### Adapted Provision

The adapted online provision information can be found in the table below, with fuller details in emails to participants - please see 'date email sent' and your 'junk mail' if you are unable to locate the invitation.

| Work Group (Secondary)  | Day            | Online workshop date(s) | Time of online workshop | Date email sent |
|---|----------------|-------------------------|-------------------------|-----------------|
| Level 3 - Embedding A Level Technology  | 2 & 3 combined | 29.6.20                 | 1300-1500               | 06.5.20         |
| Developing Fluency & Connected Understanding for Lower Attaining Secondary Pupils | 2              | 08.7.20                 | 1300-1530               | 18.5.20         |

### Work Groups 2020-21 - arrangements

#### **Covid Recovery**

The school year 2020/21 will be substantially affected by the impact of the coronavirus outbreak. The knock-on effects on school life and teachers' working lives can't be predicted with any certainty. So, all Maths Hubs work will be flexible and adapt to changing realities. There's likely to be more live online collaboration, often including use of video, for example. In addition, Work Group content will be adjusted to address schools' recovery from coronavirus-related disruption alongside work on the central maths subject matter of each project.

To support schools so that multiple teachers can engage with funded, high quality, collaborative, classroom based, continuing professional development to make a positive difference in learning for children, we have put the following support systems in place:

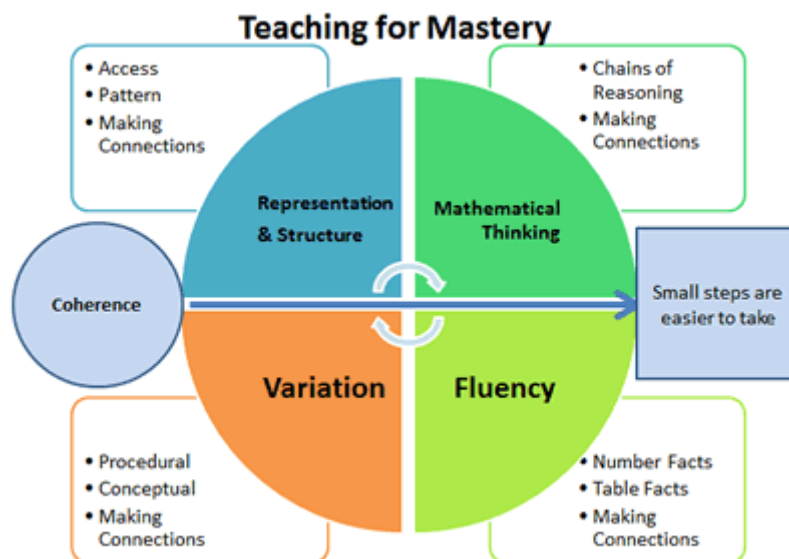
- there will be no SHaW Maths Hub workshops during September
- many Work Groups starting in October and November will begin with an online workshop
- face to face workshops will only take place when schools are fully open
- we intend to stick to scheduled dates by booking online platforms to offer adapted provision should face to face provision not be possible
- we will continue to listen to and support School Leaders

schools will continue to receive full funding for funded projects whether workshops are online or face to face

## [Joining a Secondary Teaching for Mastery Work Group in 2020-21](#)

We recommend that you complete your booking by Tuesday 30th June if you wish to take part in this popular Work Group next year, having been oversubscribed this year.

As well as receiving bespoke support from one of SHaW Maths Hub's TfM Specialists, participating schools will also receive £2000 to support developments. The Work Group is suitable for **all** Maths departments, irrespective of whether you have setting or mixed attainment classes. Schools interested in joining TfM Work Groups can find further details and book [here](#).



Schools participating in Teaching for Mastery Work Groups this year will automatically be enrolled for Embedding Mastery Work Groups for 2020-21, including £1000 funding for each school. Please notify Catherine Walker by email to [shawmathshub@tpstrust.co.uk](mailto:shawmathshub@tpstrust.co.uk) if there are any changes to names or email addresses for participants.

---

## **Booking Form**

Please use the [online bookings system](#) for bookings. All work groups are free, with cover costs of up to £200 per day paid for teachers in their first two years of teaching.

---

## **Useful Links:**

- [Advanced Mathematics Support Programme - West Midlands](#)
  - [Assessment materials - Secondary Teaching for Mastery](#)
  - [Charlie Stripp Blog - Protected Maths PD Time for all teachers](#)
  - [EEF Blog: What maths teachers need to know about pupils using calculators](#)
  - [Equals Online - free SEND & Maths ideas and resources](#)
  - [EEF Report - Improving Maths in Key Stages Two and Three](#)
  - [Language of Mathematics in Science Guide](#)
  - [Marking Guidance](#)
  - [Maths Glossary](#)
  - [NCETM Maths Podcasts](#)
  - [NCETM Qualifications and Curriculum Microsite](#)
  - [NRICH Teacher Newsletters](#)
  - [Primary Teaching for Mastery Evaluation Report](#)
- 

## **Can't find the answers?**

If you are unable to find answers to your queries from our [work groups page](#) please email Catherine Walker, our Maths Hub Operations Manager: [mathshub@tpstrust.co.uk](mailto:mathshub@tpstrust.co.uk)

Check our website: [www.shawmathshub.co.uk](http://www.shawmathshub.co.uk)

Follow us on Twitter: [@shawmathshub](https://twitter.com/shawmathshub)

Go to [www.shawmathshub.co.uk/register](http://www.shawmathshub.co.uk/register) if you wish to be added to our database to receive fortnightly updates directly - stating your preference for Primary and/or

Secondary.

## **Graham**

Graham Charles

SHaW Maths Hub Strategic Lead

[www.shawmathshub.co.uk](http://www.shawmathshub.co.uk)

[@shawmathshub](https://twitter.com/shawmathshub)



---

### **Our mailing address is:**

SHaW Maths Hub  
The Priory School  
Longden Road  
Shrewsbury  
Shropshire  
SY3 9EE

Click [here](#) to find out more about Salop Teaching Alliance CPD opportunities.

You have received this email because you have previously engaged with the Maths Hub. Should you no longer wish to receive emails please let us know. For information on our privacy policy please visit [this link](#).

You can [update your preferences](#) or [unsubscribe from this list](#)

